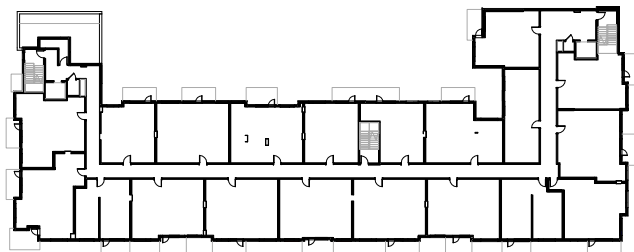
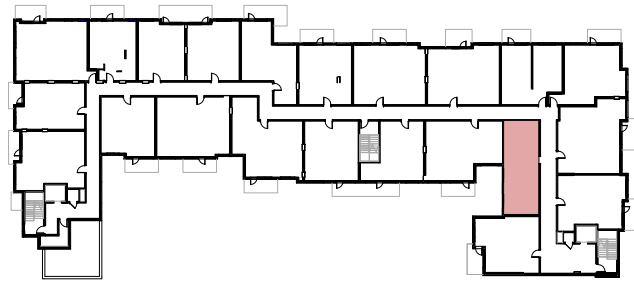
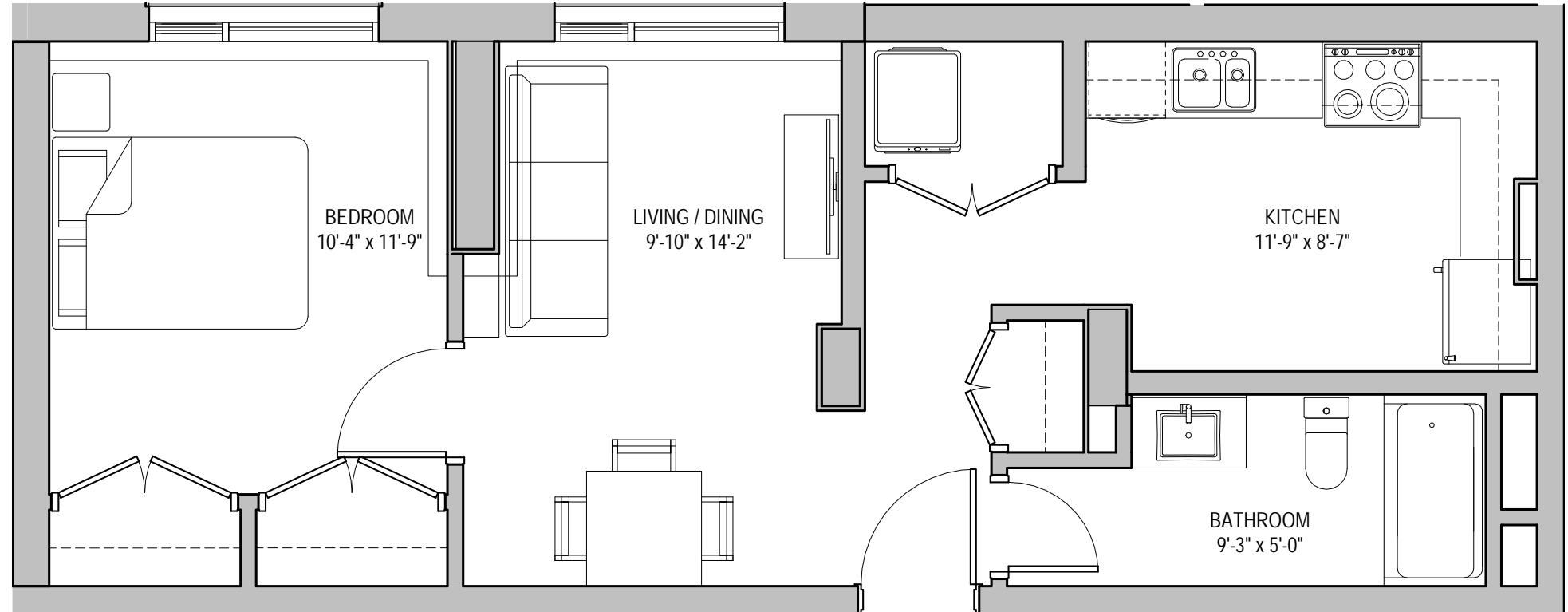


# SUITE B2/04

## 1 BEDROOM

LEVEL 01	B2-104
LEVEL 02	B2-204
LEVEL 03	B2-304
LEVEL 04	B2-404
LEVEL 05	B2-504
LEVEL 06	B2-604
LEVEL 07	B2-704
LEVEL 08	B2-804
LEVEL 09	B2-904
LEVEL 10	B2-1004

**SUITE AREA 598 SF**



Note: Suite Plan has been rotated to fit the page.

The Landlord and Owner and its authorized representatives and Property Management Company reserves the right to make modifications, deletions, additions or changes to sizes, specifications, rental rates, rental policies, security deposits, incentives, Residential Lease Agreement terms, materials, colours, illustrations and features at any time without notice. E.&O.E. Key plans and floorplans and virtual tours may not be entirely accurate as shown. Any stated sq. ft. may vary from actual sq. ft. and may not be accurate as shown. All colours and illustrations are artist's concept. Including, but not limited to, any images may include locations or activities not on or near the property. Although reasonable efforts have been made to ensure that the information provided is accurate and current, such information is subject to change at any time without notice. The Landlord and Owner and its authorized representatives and Property Management Company will not be responsible or liable for any direct indirect, incidental, special or consequential damages arising out of or relating to any inaccurate information, or any change, deletions, modifications or additions to any information. In compiling any information, the Landlord and Owner and its authorized representatives and Property Management Company has relied solely on the accuracy, completeness and quality of the information provided by the contractors, sub trades, suppliers, manufacturers and other parties in relation to the Property or Premises and is not liable for such information. Residential Lease Agreements and Schedules and other Lease related documents are subject to several Landlord and Owner and its authorized representatives and Property Management Company conditions which are subject to change at anytime without notice.

